



# Capability Statement

*"...small enough to care, big enough to make a difference..."*

# Introduction

INFOCUS provides both resourcing and contracting solutions to the UK Infrastructure, Utility and Construction industries including the Rail, Light Rail, Airports, Utilities and Nuclear sectors.

Founded in 2012 Infocus has evolved from a small manpower supply operation to a national resource able to deploy over 500 people daily as well as taking on full contracting responsibility for packages of work.

## Infrastructure



**Manpower  
Supply**



**Transport and  
Equipment**



**Full  
Contracting  
Packages**

## Key Customers

**mtr** Elizabeth line |





Focused on customer intimacy, speed of response/delivery and value for money. Our clients have described us as –

*“...small enough to care, big enough to make a difference.”*

## Company Principles

INFOCUS management team will always work collaboratively and intimately with our clients from the very early stages of a project to make sure we fully understand the customer's needs and can then ensure these are met and we deliver excellence on site.



**Professional**



**Passionate**



**Teamwork**



**Responsible**



**Integrity**

# Key Strengths

## Nationwide Reach

We provide national coverage with regional offices located in the South East, London, Anglia, Midlands and Wales.



## Focus and Reliability

Our management team is highly focused with extensive operational and recruitment experience. We pride ourselves in providing solutions to tackle the toughest challenges and through our knowledge, industry capabilities and dedication to providing excellent service to our clients.

We have a reputation for evaluating each situation and delivering innovative solutions.

Our dedicated personnel are fully trained, experienced, and committed to providing a safe and high-quality service for our customers.



## Social and Diverse

Infocus has embedded social values and a diverse culture within the business dedicated to inspiring and developing tomorrow's workforce through connecting with and supporting local communities.

## Care for the Environment

Infocus care about the impact our business has on the planet and the individuals around us. We work hard to reduce this impact through focus on:

- Energy and Carbon management
- Social Performance
- Membership of the Supply Chain School
- Strict adherence to our Modern Anti-Slavery Policy

## Bespoke RMS System

Our bespoke resource planning tool enables us to schedule manpower and works efficiently without endangering compliance to the many regulations and standards applicable to the industries we serve.

The RMS manages health, safety and wellbeing ensuring complete fatigue management, competence and training compliance and the most efficient use of resources based on skills, location, and availability.





## Safety through Culture and Management

Safety is at the core of everything we do and is our first consideration when planning any activity.

All our workers and management are equipped with an App that allows them to instantly communicate any fears or concerns and all are briefed that our Worksafe culture allows them to refuse any activity they deem might endanger themselves or others, without fear of recrimination.

- Infocus is fully compliant with all industry standards including those of Network Rail and Transport for London
- CMIO SH CEnv OSHCR qualified HSQE management
- Regular communications, bulletins and toolbox talks on health and safety matters including regular attendance by Infocus Directors
- Regular training and competence assessments
- Holders of accreditation from RISQS, Achilles, UVDB, Constructionline Gold, Builder's Profile and CHAS



# Examples of Work Undertaken:

## On Network Rail Managed Infrastructure



### Cotswolds Platform Extensions

Providing supervisory staff to help carry out platform extensions and associated works on the North Cotswold line at 7 stations. Using modular expanded polystyrene platform systems, the work also included re-surfacing, drainage renewals, realignment of copers, lighting, platform gauging, stop boards and shelter upgrades.

### York Training Centre Upgrade

Infocus carried out packages of work for the installation of OHLE foundations and structure guards, AHB installation of batteries, power supplies, location cases and associated connections.

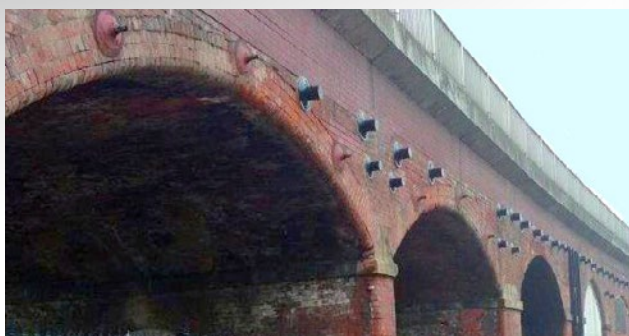






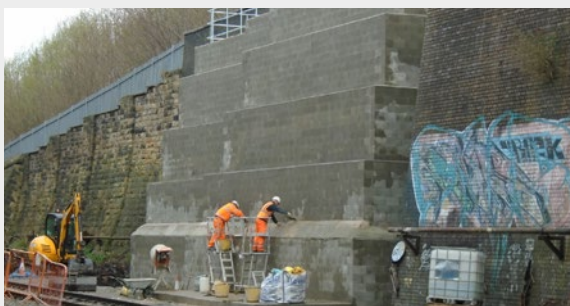
### **Croxdale Viaduct Remedial Works – Durham**

We were subcontracted to complete remedial works involving the infill of construction voids to the spandrel areas above the piers.



### **Marsh Lane Viaduct Repairs – Leeds**

Provision of teams of operatives to carry out installation of tie bars across 17 arch spans of this 19th century masonry railway bridge together with the infill of 3 piers and 4 arches with special concrete materials.



### **Pitsmoor – Sheffield**

Subcontracted to construct a supporting mass concrete wall retaining structure to repair existing railway retaining wall.

## **OHLE & Signalling**

- Supporting the resignalling and OHLE for the Reading Station Area Redevelopment (RSAR) project with OHLE and Safety Critical workers
- Working in partnership with Electren to deliver solutions on overhead wires and associated structures
- Labour framework supplying Lundy Projects for over 6 years
- Supplying staff to the Great Western Electrification Project (GWEP) including supervisors, machine operators and controllers as well as multidiscipline safety critical and civils trades
- Paddington to Newport Electrification. Provision of a multi-skilled workforce to carry out installation of driven steel piles, OHLE setting out, trial holes, identification of cables and utilities and subsequent diversions on both a planned and ad-hoc basis. Providing flexible resources from key individuals to gangs, teams and support staff during possessions and working within depots
- Awarded National Framework for Provision of Labour Services; the supply of Frontline Personnel to Network Rail related to Electrification & Plant

## Other Works & Projects

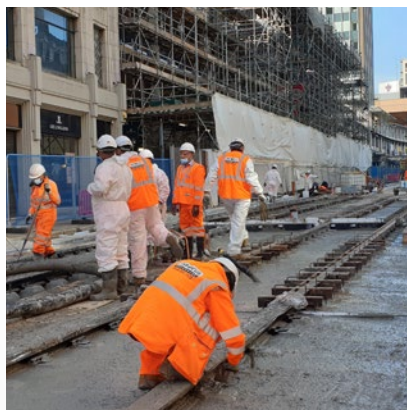
Client	Project	Provision
Colas Rail	Waterloo Programme	Specialist supporting trades
J Murphy & Sons	Minor Works and Maintenance framework	Multidiscipline safety critical personnel
Volker Fitzpatrick	Southern Multi-Functional Framework	Skilled multidisciplined workers, safety critical and isolation support staff
J Murphy & Sons	Anglia & CAMS Framework	Multidiscipline safety critical and civils staff
Volker Fitzpatrick	Romford & Ilford Phase 2 Works	Multidiscipline teams
Volker Fitzpatrick	Felixstowe Capacity Enhancement	Safety Critical personnel
Systra & Volker Fitzpatrick	Cambridge & Kings Lynn Service Enhancement	Teams to complete platform extensions
Volker Fitzpatrick	Barking Riverside Extension - MSVFJV	Multidiscipline operatives to complete track extension, connection of goods yard to Tilbury Loop and New Station Construction
Volker Fitzpatrick	Feltham Depot & Mainline Works	Skilled workers for construction of bi-directional track, carriage train wash, automatic vehicle inspection system and accommodation buildings
Volker Fitzpatrick	Brent Cross	Safety Critical Staff to assist with building a new Railway Station
BCM	Level Crossings	Packages to facilitate the renewal and improvement of level crossings at numerous Network Rail locations
Network Rail	Framework for Provision of Labour Services	Frontline Personnel to Network Rail related to Electrification & Plant nationally
BCM	National Multi-Functional Framework	Skilled multidisciplined workers, safety critical and isolation support staff
Dyer & Butler	Culverts	Relining of culvert structures utilising UV CIPP lining technology

## On Light Rail & London Overground Projects

### Midland Metro Alliance

Provision of civils trades and labour teams to assist with the construction of tramline extensions and renewals covering 34km of track and 51 tram stops.

Infocus is also delivering packages of work including fencing, paving and concrete works.







## London Overground

Supporting Dyer & Butler with the London Overground Capacity Improvement programme (LOCIP) involving the extension of 31 platforms across 17 stations. Infocus supplied multidiscipline civils and safety critical staff and site management as well as taking on packages of work.

At peak Infocus supplied over 300 operatives daily to 14 live operational sites covering every civils and railway discipline as the majority supplier in support of our client.

Infocus simultaneously supported Colas Rail with the Signalling and Operational Telecomms aspects of the same programme providing P-Way track and multi-skilled civils teams. Works included construction of walkways, signals, location cases, REB bases, cable troughing, UTX installation, drainage, disabled access, track renewals, S & C, CCTV and much more.

Working with J Murphy & Sons on the enabling works for Gospel Oak to Barking Electrification Infocus undertook to provide local staff and resources and worked collaboratively with the local community to recruit civils, trades, and safety critical staff.

At the same time, we provided an additional 250 PTS workers daily to another principal contractor on the same project.

Infocus supplied multidiscipline civils and safety critical staff and site management.







## On DLR & Crossrail Projects

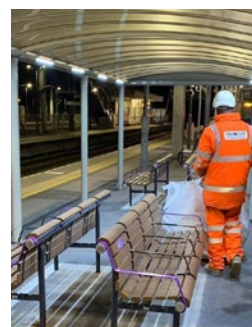


### New Station at Custom House

Working with Dyer & Butler as their main supporting supplier on the removal of existing station canopies and installation of a new mezzanine level including two additional staircases, cladding, station glazing and tiling, ticket booths, refurbishing station amenities and installation of gatelines and platform and concourse paving.

### MTR Elizabeth Line

Working with MTR to ensure compliance with Health & Safety requirements and that there was no disruption to station staff and the travelling public Infocus carried out platform seating enablement works and signage groundworks.





**Other MTR Works include:**

- Possession planning
- Logistic support
- De-vegetation
- Reinforced concrete foundations
- Removal of redundant signage
- Anti-trespass solutions
- Station window replacement
- Metal alteration / fabrication
- Palisade fencing
- GRP fencing
- Key clamp fencing
- Platform end barriers
- Platform furniture installation
- Armco barrier installation
- Gutter cleaning
- Signage installation

## Civils Off Rail

In addition to the rail related works shown in the projects outlined Infocus has also supported clients with numerous civils related minor projects requiring civils trades and experience. In many instances the addition of rail related competencies and experience has been a considerable advantage.

**Works have included:**

- Replacement of bridge deck joints
- Overplating of internal girders on underbridge
- Cantilever walkway replacement
- Footbridge strengthening works
- Foundation repair and scour prevention
- Railway bridge maintenance
- Brickwork strengthening using tie bars
- Brickwork repointing and patch repairs
- Waterproofing and drainage improvement
- Embankment remediation
- Wingwall stabilisation
- Stabilisation of spandrel walls
- Install vandal proof anti-trespass barrier
- Highway compliant parapet protection

**Other Works & Projects**

Client	Project	Provision
Colas	Parkhead Viaduct – Brunel Structure	Brickwork repairs and strengthening to an eight-span viaduct structure over a canal
St Mark's Catholic School	Harlow Drainage Improvement Works	Complete project delivery; the removal and replacement of foul and surface drainage system throughout the school premises. Including manholes, and gullies and replacement tarmac surfacing
John Sisk & Son	Birmingham Broad Street Paving	Subcontract Moda Living Street Block Paving
Cleshar	Hammersmith GE Power Supply Building, Barons Court Substation	Ground and mezzanine floor reinforced and concreted, prior to the installation of SER room



## Contact Details

For further information please contact a member of the team on:



**Head office**  
01322 370100

**London**  
020 8366 7372

**Colchester**  
01206 913236

**Birmingham**  
0121 592 0854

**Wales**  
01443 557400



[enquiries@infocusresources.com](mailto:enquiries@infocusresources.com)



**Infocus Resources**  
Unit 8A, Swanscombe Business Centre  
17 London Road, Swanscombe, Kent DA10 0LH